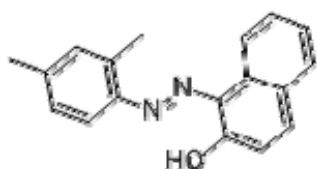


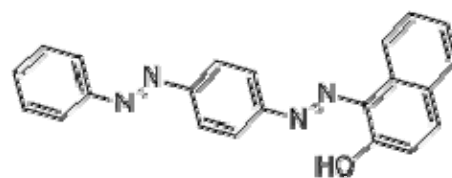
1. 苏丹红 I (M.W. 248.28)

Sudan I



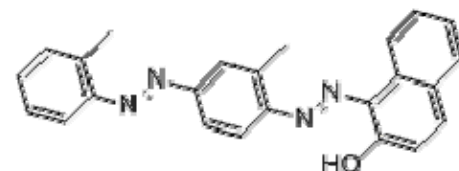
2. 苏丹红 II (M.W. 276.33)

Sudan II



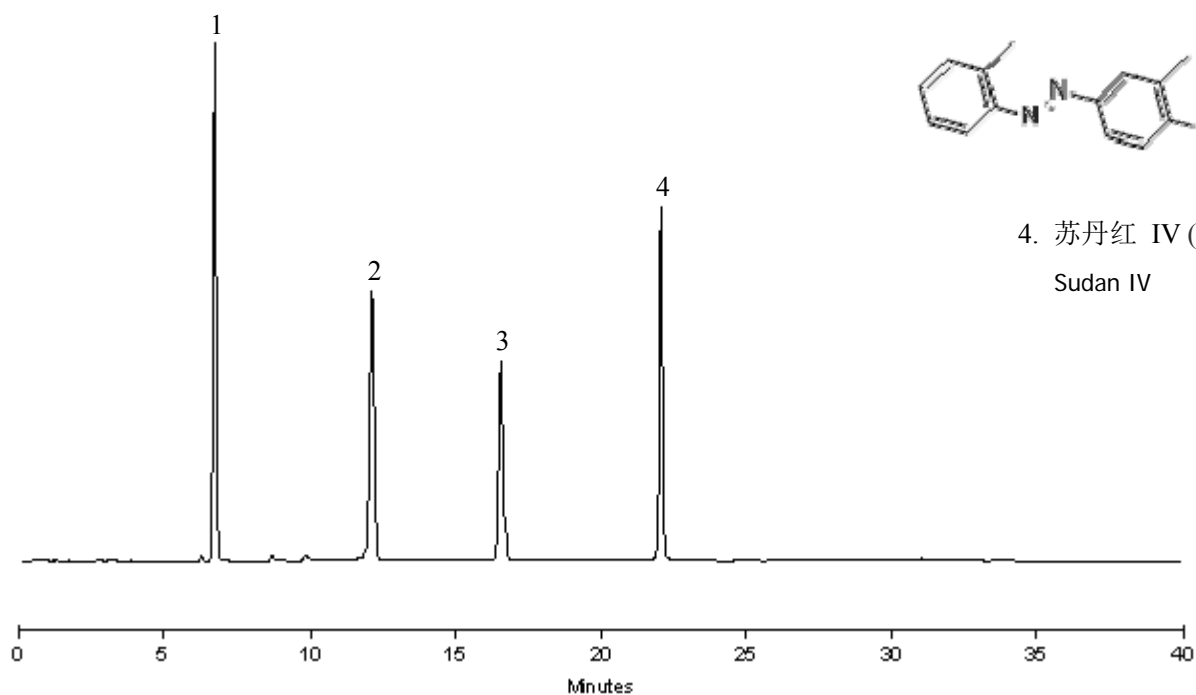
3. 苏丹红 III (M.W. 352.39)

Sudan III



4. 苏丹红 IV (M.W. 380.44)

Sudan IV



色谱条件 (GB/T 19681-2005)

色谱柱	: CAPCELL PAK C ₁₈ MG S3; 4.6 mm i.d.×150 mm
流动相	: A) 0.1% HCOOH in H ₂ O / CH ₃ CN = 85 / 15 : B) 0.1% HCOOH in CH ₃ CN / CH ₃ COCH ₃ = 80 / 20 : B 75% (0.0 min) -> 75% (10.0 min) -> 100% (25.0 min) -> 100% (32.0 min) -> 75% (35 min) -> 75% (40.0 min)
流速	: 1.0 mL/min
温度	: 35 °C
检测	: PDA 478 nm
进样量	: 10 μL
样品浓度	: 2.56 μg/mL