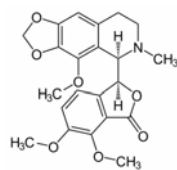
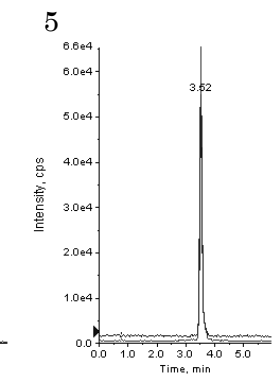
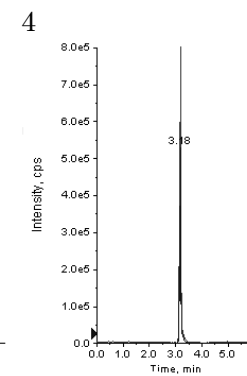
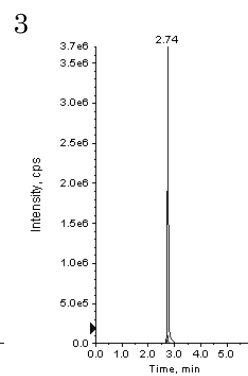
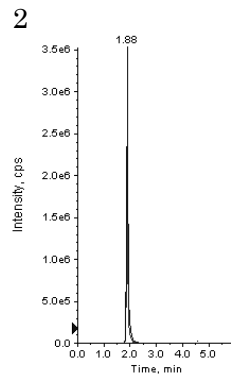
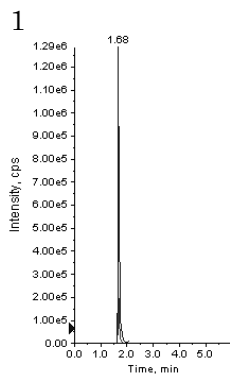
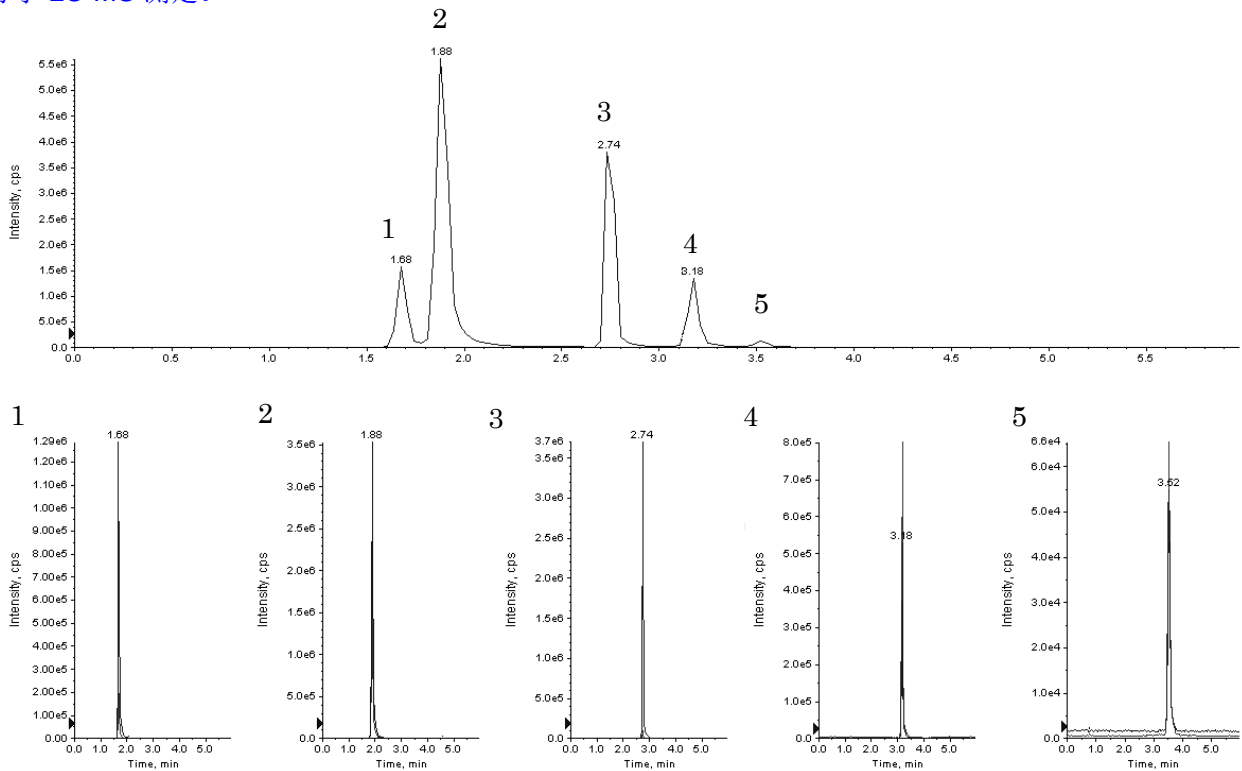
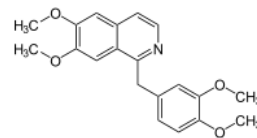


本实验按照《火锅食品中罂粟碱、吗啡、那可丁、可待因、蒂巴因的 LC-MS 测定》中的测定方法，使用资生堂 PC HILIC S3; 2.0mm i.d ×100mm 色谱柱，对罂粟碱、吗啡、那可丁、可待因、蒂巴因混合标准品进行了 LC-MS 测定。



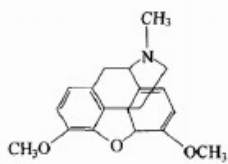
1. 那可丁 (0.25 µg/mL)

Noscapine(M.W. 413.4)



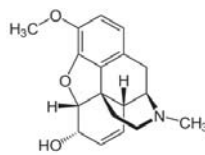
2. 罂粟碱 (0.25 µg/mL)

PapaVerine(M.W. 339.4)



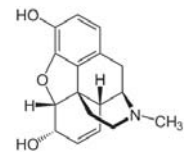
3. 蒂巴因 (0.25 µg/mL)

Thebaine(M.W. 311.4)



4. 可待因 (0.25 µg/mL)

Codeine(M.W.299.4)



5. 吗啡 (0.25 µg/mL)

Morphine(M.W.285.4)

色谱条件:

- 色谱柱 : PC HILIC S3; 2.0mm i.d.×100mm
 流动相 : A) 0.1% HCOOH in 10 mM HCOONH₄ B) 0.1% HCOOH in CH₃CN
 : B 90%(0min) -> 90%(0.3min) -> 80%(1.0min) -> 80%(2.5min) -> 90%(3.0min) -> 90%(6min)
 流速 : 0.3 mL / min
 温度 : 40 °C
 AB SCIEX QTRAP 5500 ; ESI MS POSITIVE ;
 MRM 1. narcotine m/z 414.7>220.5 , m/z 414.7>353.3
 2. Papaverine m/z 340.8>202.2 m/z 340.8>171.1
 检测 : 3. Thebaine m/z 312.9>58.1 m/z 312.9>249.1
 4. Codeine m/z 300.8>215.2 m/z 300.8>165.1
 5. Morphine m/z 285.5>181.1 m/z 285.5>165.0

- 进样量 : 5 µL
 样品浓度 : 各 0.25 µg/mL