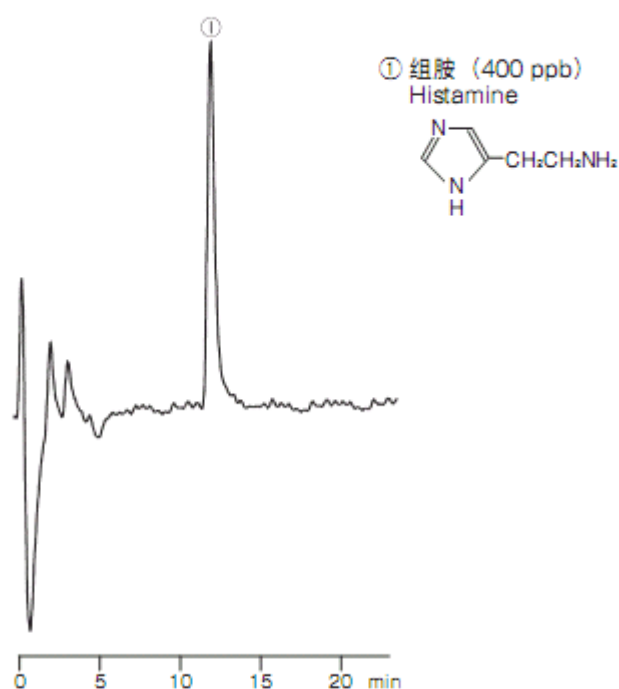


组胺的柱后衍生法



HPLC Conditions

ha022

Column : CAPCELL PAK C₁₈ UG120 S5 ; 2.0 mm i.d. × 150 mm
Mobile phase : 10 mmol/L Sodium heptanesulfonate, 20 mmol/L Phosphate buffer (pH 3.2) / CH₃OH = 75 / 25
Flow rate : 200 μL/min
Temperature : 40 °C
Detection : FL Ex. 340 nm, Em. 455 nm
Reaction Sol. : [1 mg/mL OPA, 100 mmol/L Borate buffer (pH10)] / CH₃OH = 90 / 10, 0.2 vol% 2-Mercaptoethanol*
Flow rate : 20 μL/min
Reactor Temp. : 40 °C
Coil length : 0.13 mm i.d. × 2.5 m
Inj. vol. : 2.0 μL
* Instead of Mercaptoethanol, N-Acetyl-L-Cysteine 2mg/ml can be used to get the same Results