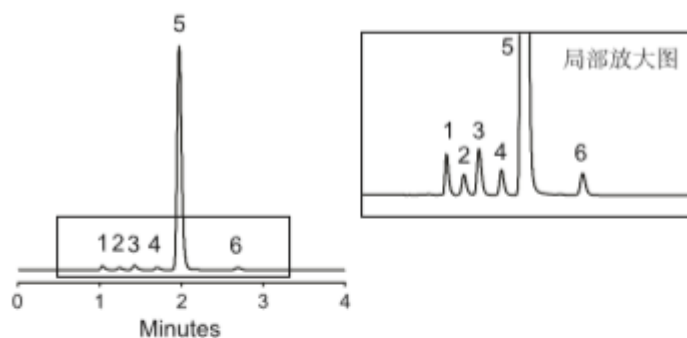
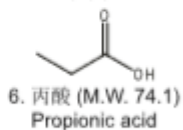
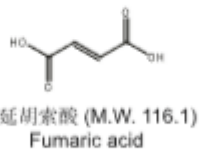
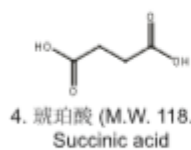
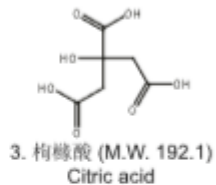
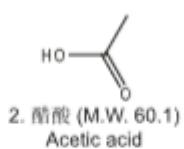
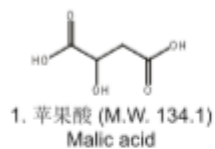


## 延胡索酸



### 色谱条件

色谱柱: CAPCELL CORE ADME S2.7 ; 2.1 mm i.d. × 100 mm

流动相: 0.1 vol%磷酸 / 乙腈 = 99 / 1

流速: 0.3 mL/min

温度: 40 °C

检测: UV 210 nm

进样量: 0.5 μL

样品浓度: 1/2/3/4/6: 300 μg/mL, 5: 150 μg/mL (溶剂为2.5 vol%乙腈)