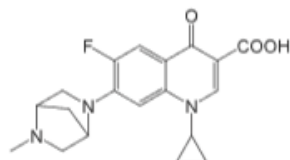
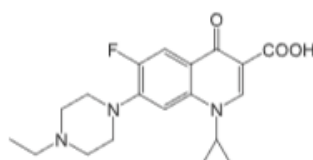


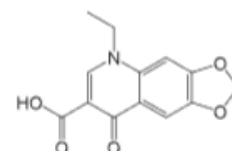
① 氧氟沙星 (10 ppm)
Ofloxacin (M.W. 361.4)



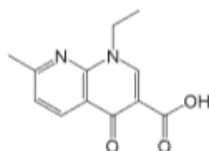
② 达氟沙星 (10 ppm)
Danofloxacin (M.W. 357.4)



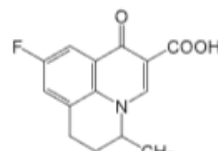
③ 恩氟沙星 (10 ppm)
Enrofloxacin (M.W. 359.4)



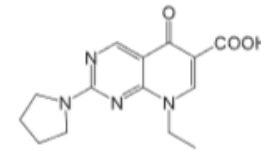
④ 恶喹酸 (10 ppm)
Oxolinic acid (M.W. 261.2)



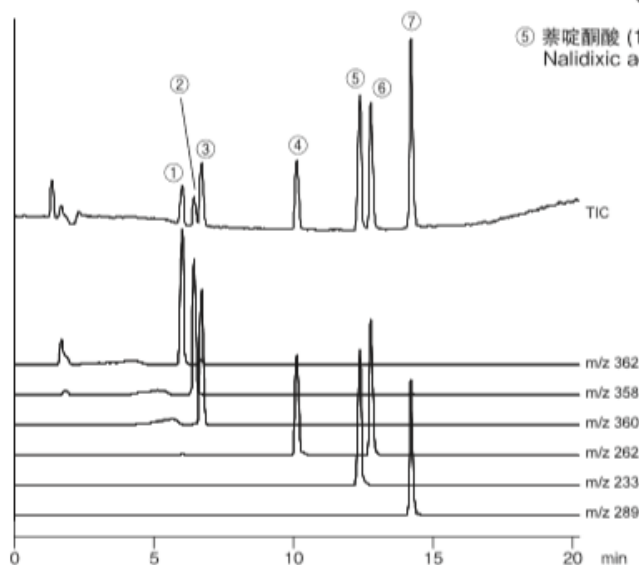
⑤ 萘啶酮酸 (10 ppm)
Nalidixic acid (M.W. 232.2)



⑥ 氟甲喹 (10 ppm)
Flumequine (M.W. 261.3)



⑦ 吡咯米酸 (10 ppm)
Piromidic acid (M.W. 288.3)



HPLC Conditions

Column : CAPCELL PAK C₁₈ MGII S5 ; 2.0 mm i.d. x 150 mm
 Mobile phase : A) H₂O / CH₃COOH = 100 / 0.3
 B) CH₃CN / CH₃COOH = 100 / 0.3
 B 10 % (0.0 min) -> 80 % (20.0 min) -> 80 % (25.0 min) -> 10 % (25.1 min) Gradient
 Flow rate : 200 μL/min
 Temperature : 40 °C
 Detection : MS ESI Positive
 Inj. vol. : 5 μL
 Sample dissolved in : 0.1 mol/L NaOH / CH₃OH = 4 / 96 (10 ppm)
 【Food analysis mixed standard solution 2, 7 compounds for LC-MS
 (食品分析用的混合标准液 2 喹诺酮药 LC 对象 7 种)】
 关东化学有限公司
 ※ 1 μg/mL = 1 ppm