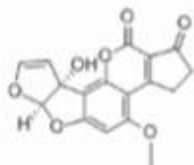
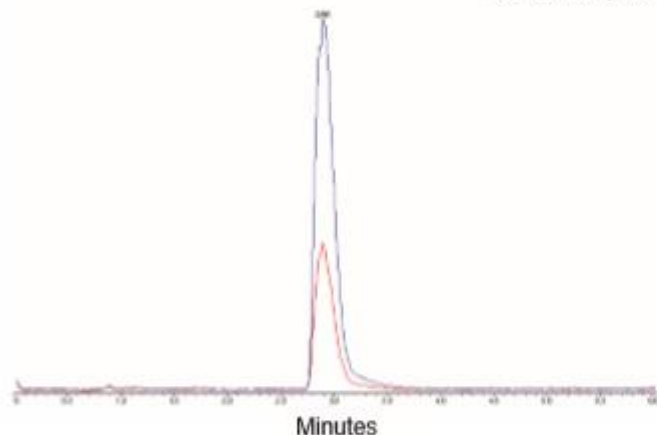


## 黄曲霉毒素



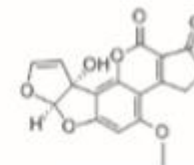
1. 黄曲霉毒素M1(50 ng/mL)  
Aflatoxin M1(M.W.328.3)



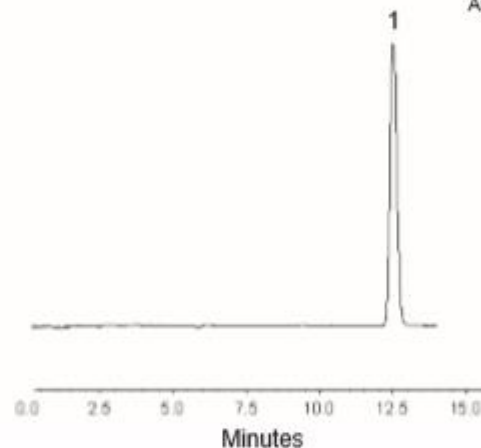
### 色谱条件 (GB 5413.37-2010)

色谱柱: CAPCELL CORE C<sub>18</sub> S2.7; 2.1mm i.d.×100mm  
流动相: A) 0.1%甲酸, B) 乙腈/甲醇 = 1/1  
B 32%(0 min) →45%(4.2 min) →100%(5.0 min) →100%(5.7 min)  
→32%(6.0 min)  
流速: 0.3 mL/min  
温度: 35 °C  
检测: MS ESI Positive, MRM 329.0/273.2; 329.0/259.2  
进样量: 10 μL  
样品浓度: 50 ng/mL

## 黄曲霉毒素



1. 黄曲霉毒素M1(80 ng/mL)  
Aflatoxin M1(M.W.328.3)



### 色谱条件 (GB 5413.37-2010)

色谱柱: CAPCELL PAK C<sub>18</sub> MG S5; 4.6mm i.d.×250mm  
流动相: 水/乙腈 = 75/25  
流速: 1.0 mL/min  
温度: 35 °C  
检测: FL Ex.365nm Em.435nm  
进样量: 5 μL  
样品浓度: 80 ng/mL