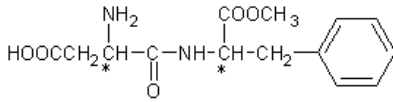


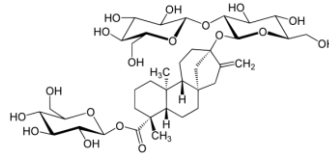
①安塞蜜 (M.W.201.24)

Acesulfame Potassium



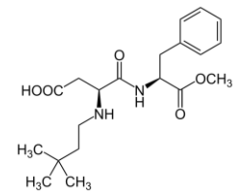
②阿斯巴甜 (M.W.294.30)

Aspartame



③甜菊糖苷 (M.W.804.86)

Stevioside

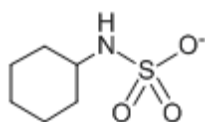


④纽甜 (M.W.378.46)

Neotame

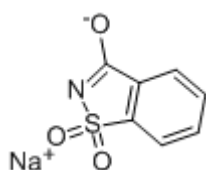
### 色谱条件

- 色谱柱 : CAPCELL PAK ADME S5;4.6mm i.d.×250mm  
 流动相 : A:200mmol/L NaClO<sub>4</sub> B:CH<sub>3</sub>CN  
 B 10%(0.0min)-> 80%(10.0min)-> 80%(13.0min)-> 10%(13.1min)  
 流速 : 1.0 mL/min  
 温度 : 35 °C  
 检测 : UV 204nm  
 进样量 : 10 μL  
 样品 : 客户配置

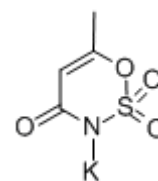


Na<sup>+</sup>

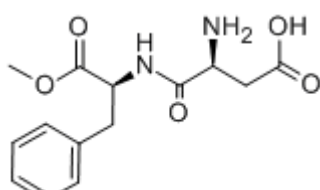
③ 甜蜜素 (M.W. 201.22)  
Sodium Cyclamate



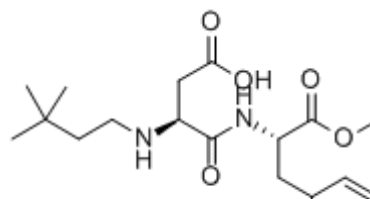
④ 糖精钠 (M.W. 205.17)  
Saccharin Sodium



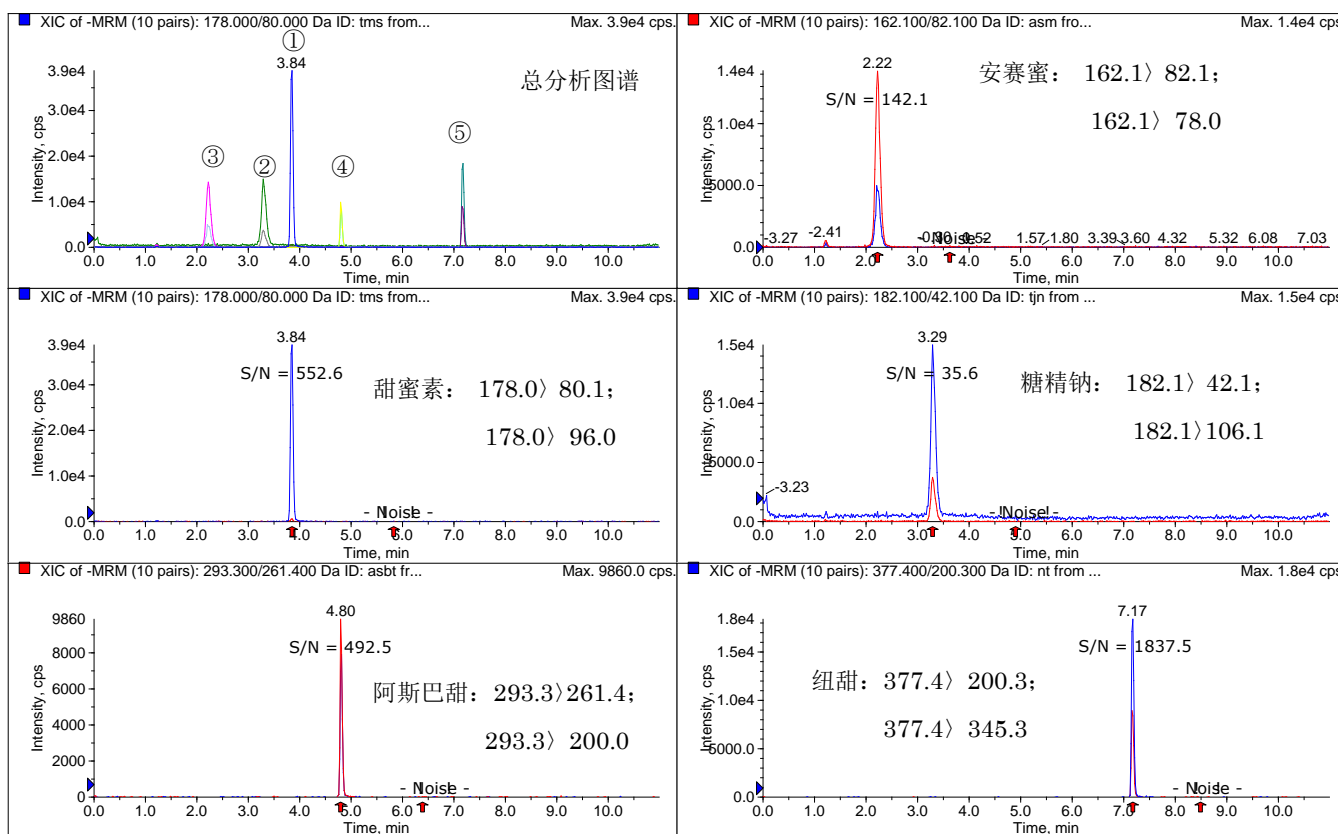
③ 安赛蜜 (M.W. 201.24)  
Acesulfame-K



④ 阿斯巴甜 (M.W. 294.3)  
Aspartame



⑤ 纽甜 (M.W. 378.46)  
Neotame



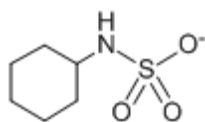
\*注: 信噪比已标于各峰上方。

## 色谱条件

色谱柱 : CAPCELL CORE C18 S2.7; 2.1 mm i.d.x100 mm  
流动相 : E) 20mM 乙酸铵 B) 乙腈  
          : F) 5%(0min)→60%(8min)→5%(8.1min)→5%(11min)  
流速 : 0.2mL/min  
温度 : 35 °C  
检测 : SCIEX QTRAP 5500; ESI;NAGETIVE;MRM  
进样量 : 5μL  
样品 : 甜蜜素、安赛蜜、阿斯巴甜、纽甜各 10ppb, 糖精钠 50ppb。  
注: 峰上标数字为信噪比。

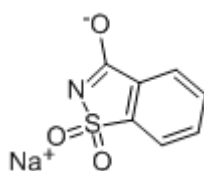
## 5 种甜味剂 LC-MS 分析-MGIII-H

## Sweeteners

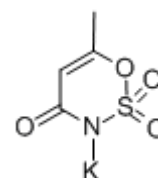


Na<sup>+</sup>

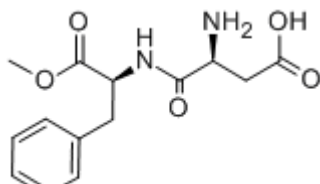
② 甜蜜素 (M.W. 201.22)  
Sodium Cyclamate



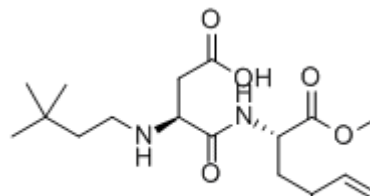
③ 糖精钠 (M.W. 205.17)  
Saccharin Sodium



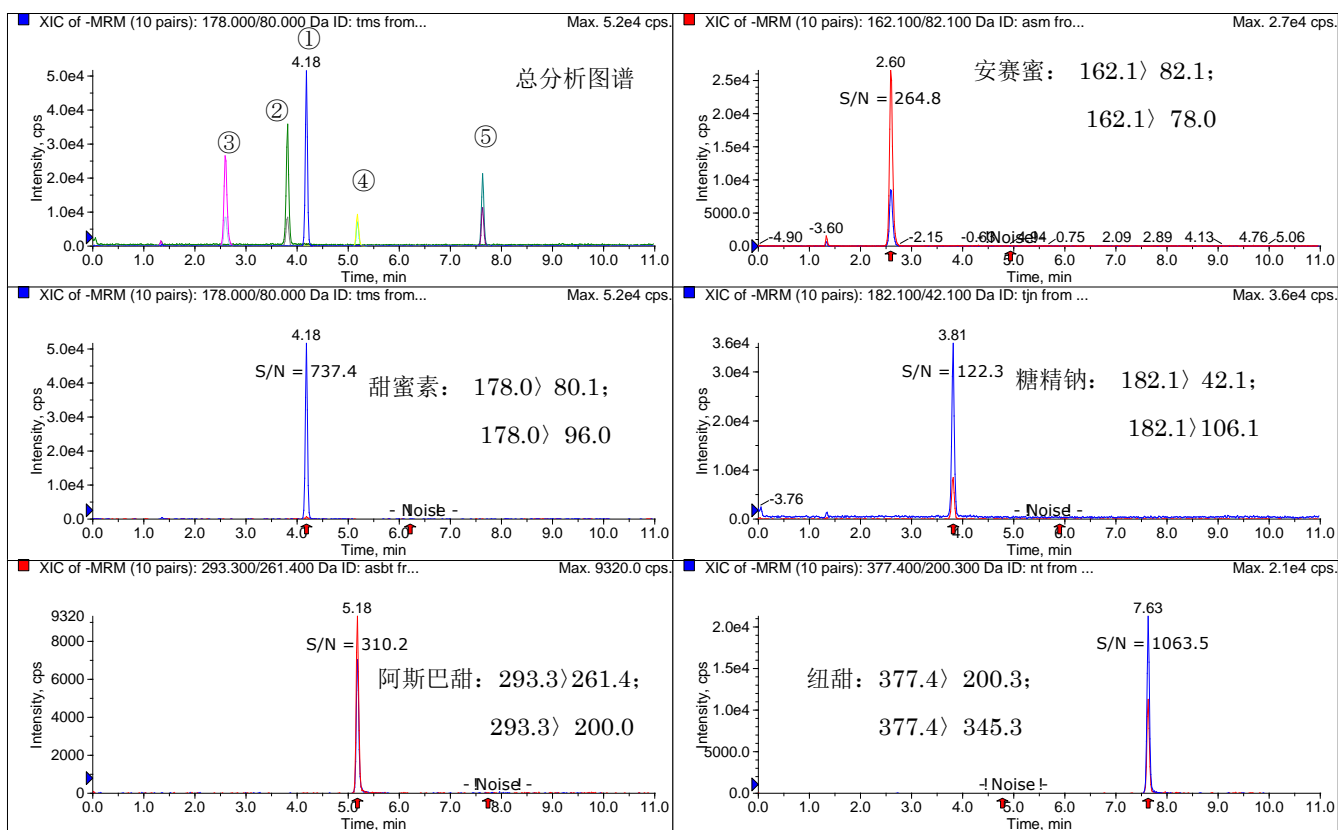
③ 安赛蜜 (M.W. 201.24)  
Acesulfame-K



④ 阿斯巴甜 (M.W. 294.3)  
Aspartame



⑤ 纽甜 (M.W. 378.46)  
Neotame



\*注: 信噪比已标于各峰上方。

## 色谱条件

色谱柱 : CAPCELL PAK MGIII-H S3; 2.0 mm i.d.x100 mm

流动相 : C) 20mM 乙酸铵 B) 乙腈  
D) 5%(0min)→60%(8min)→5%(8.1min)→5%(11min)

流速 : 0.2mL/min

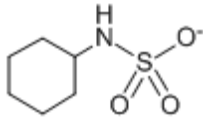
温度 : 35 °C

检测 : SCIEX QTRAP 5500; ESI;NAGETIVE;MRM

进样量 : 5μL

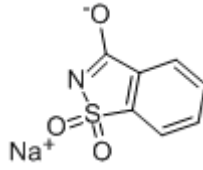
样品 : 甜蜜素、安赛蜜、阿斯巴甜、纽甜各 10ppb, 糖精钠 50ppb。

注: 峰上标数字为信噪比。

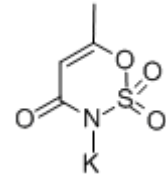


Na<sup>+</sup>

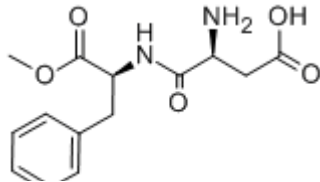
① 甜蜜素 (M.W. 201.22)  
Sodium Cyclamate



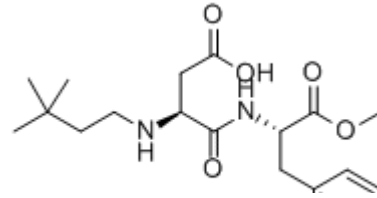
② 糖精钠 (M.W. 205.17)  
Saccharin Sodium



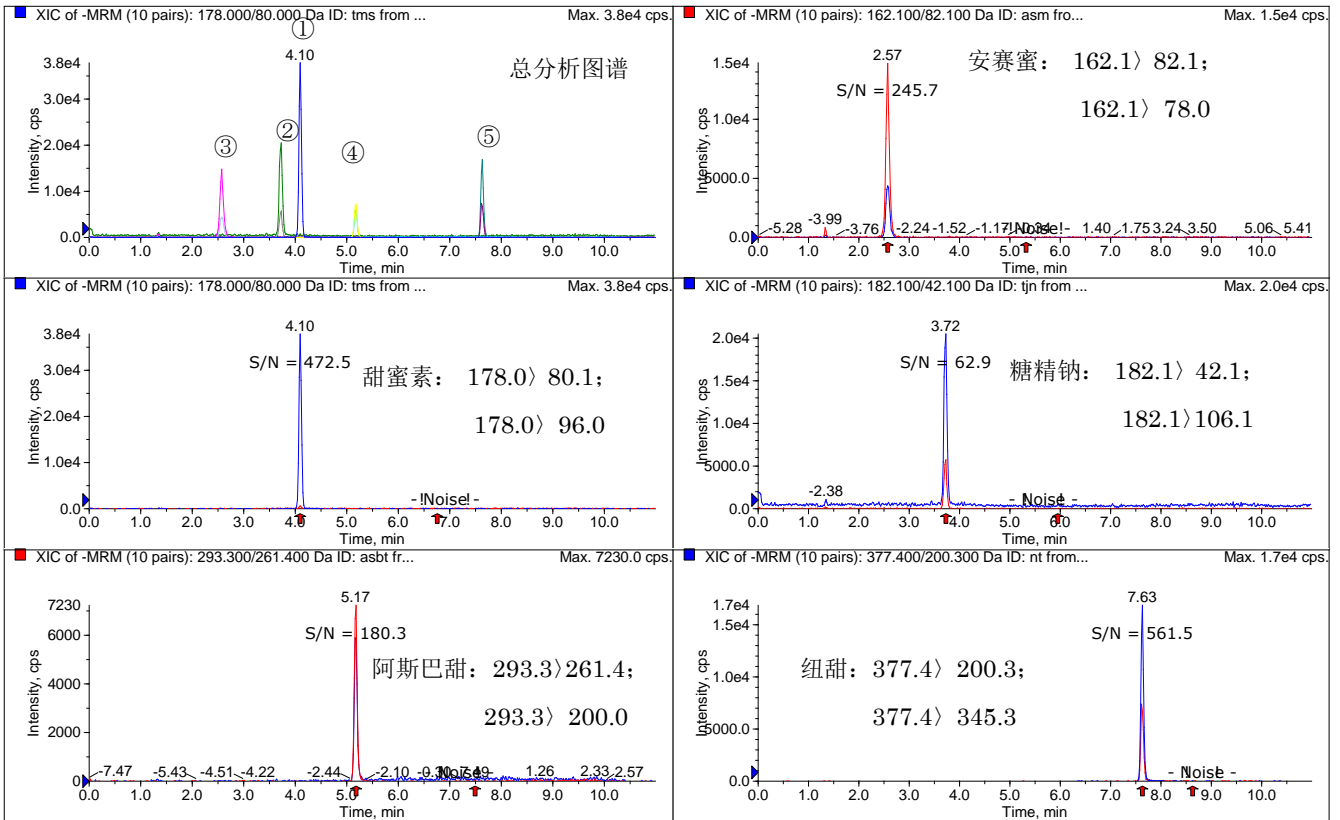
③ 安赛蜜 (M.W. 201.24)  
Acesulfame-K



④ 阿斯巴甜 (M.W. 294.3)  
Aspartame



⑤ 纽甜 (M.W. 378.46)  
Neotame



\*注：信噪比已标于各峰上方。

---

## 色谱条件

色谱柱 : CAPCELL PAK MGIII S5; 2.0 mm i.d.×100 mm  
流动相 : A) 20mM 乙酸铵    B) 乙腈  
          : B) 5%(0min)→60%(8min)→5%(8.1min)→5%(11min)  
流速 : 0.2mL/min  
温度 : 35 °C  
检测 : SCIEX QTRAP 5500; ESI;NAGETIVE;MRM  
进样量 : 5μL  
样品 : 甜蜜素、安赛蜜、阿斯巴甜、纽甜各 10ppb, 糖精钠 50ppb。  
注: 峰上标数字为信噪比。